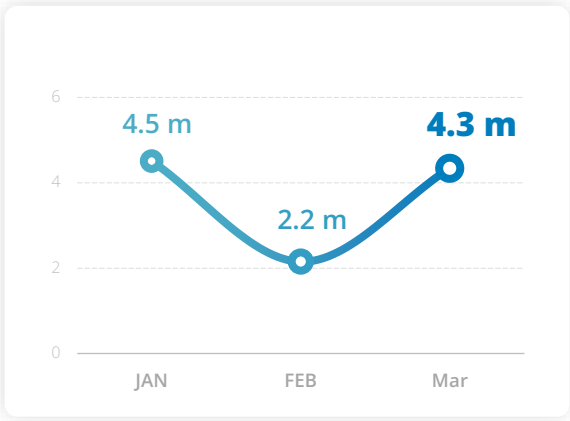


# Yemen



## PEOPLE ASSISTED

All activities

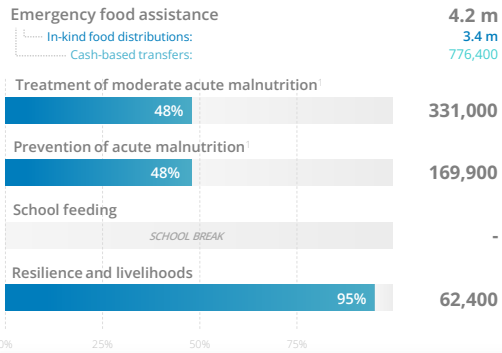


Estimated unique beneficiaries assisted across all WFP activities. Excludes overlap between activities.



## OPERATIONAL ACHIEVEMENTS

By activity



People assisted across all activities: 4.3 m

Monthly assistance figures are estimates and subject to change upon final beneficiary reconciliation. Percentages indicate reach against monthly operational plan. <sup>1</sup> Nutrition figures are based on commodity dispatches.

Source: WFP Yemen, March 2025



## TOP DONORS

By confirmed contributions (2025)

- Germany
- Canada
- United Kingdom
- Sweden
- Japan

Source: WFP, as of 31 March 2025



## FUNDING

Yemen interim country strategic plan (2023 – 2025) [MORE DETAILS](#)

6-MONTH NET FUNDING REQUIREMENT:

**US\$ 564 m**

May → October 2025

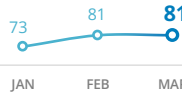
SOURCE: WFP, April 2025



## UNHAS

United Nations Humanitarian Air Service

Flights:



Passengers:

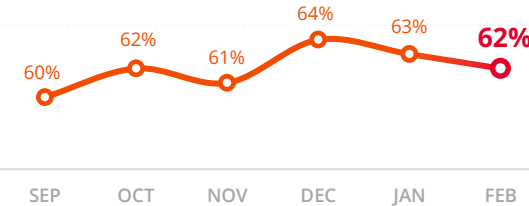


SOURCE: UNHAS Yemen, March 2025



## FOOD INSECURITY

Inadequate food consumption (FCS) [MORE DETAILS](#)

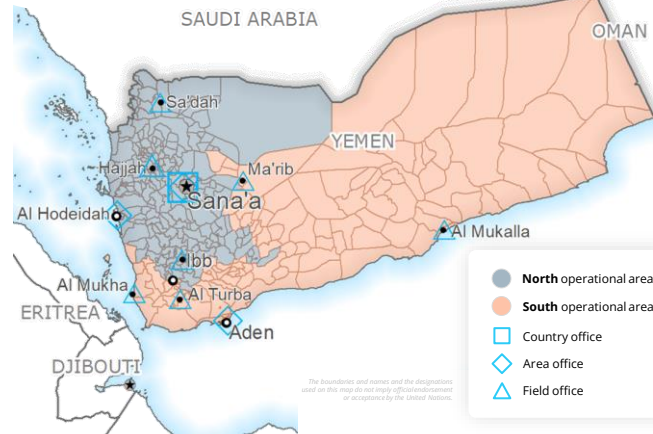


SOURCE: WFP Yemen Research, Assessments and Monitoring, March 2025



## OPERATIONAL PRESENCE

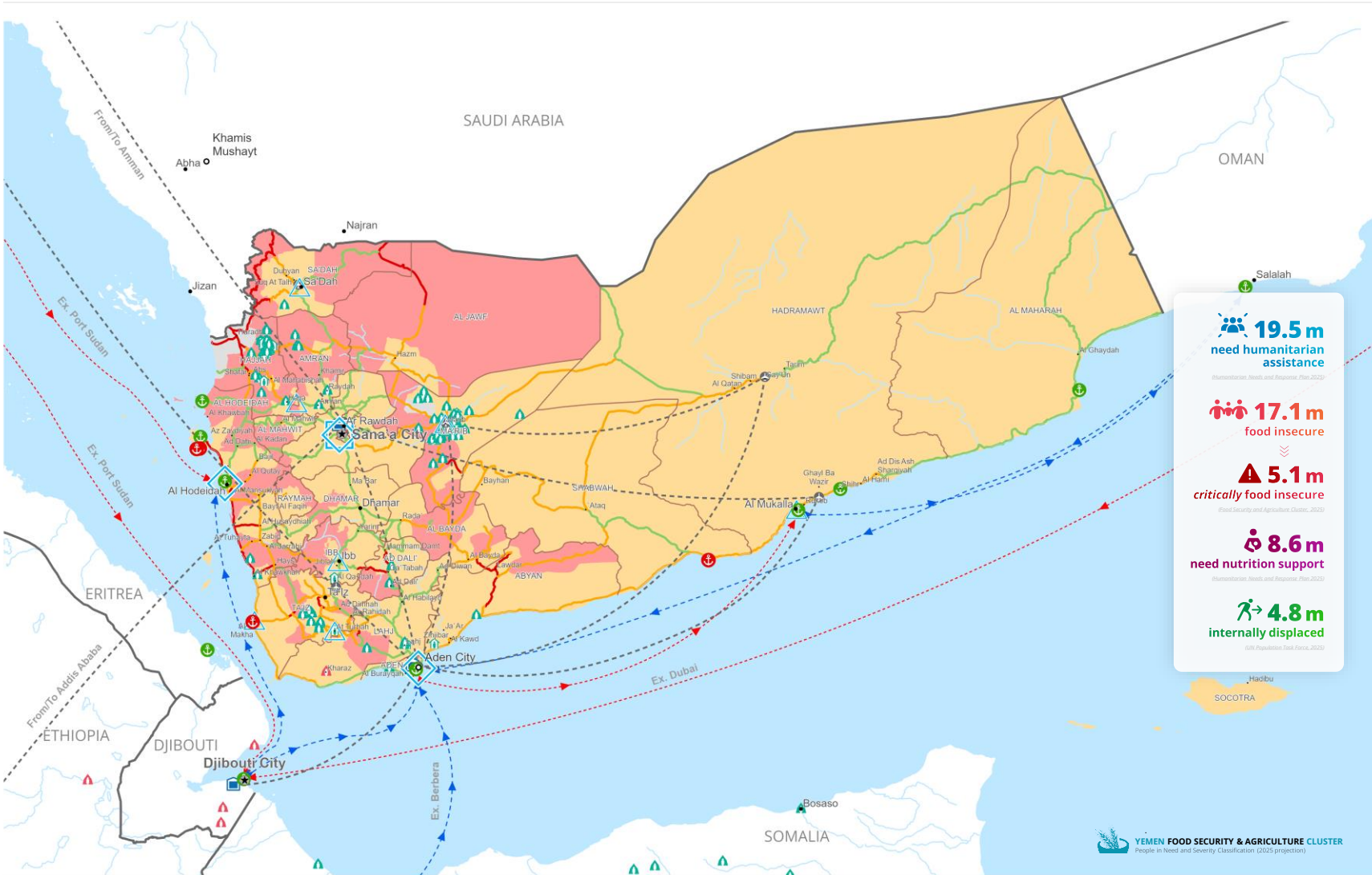
WFP Yemen



The boundaries and names and the designations used on this map do not imply official endorsement or acceptance by the United Nations.

WFP emergency response phase:  
**CORPORATE ATTENTION**

For more information: **SITUATION REPORT #3, 16 APRIL 2025**



**19.5 m**  
need humanitarian assistance  
(Humanitarian Needs and Response Plan 2025)

**17.1 m**  
food insecure

**5.1 m**  
critically food insecure  
(Food Security and Agriculture Cluster, 2025)

**8.6 m**  
need nutrition support  
(Humanitarian Needs and Response Plan 2025)

**4.8 m**  
internally displaced  
(UN Population Data Force, 2025)

YEMEN FOOD SECURITY & AGRICULTURE CLUSTER  
People in Need and Severity Classification (2025 projection)

Produced by the WFP Yemen country office in coordination with the WFP Operations Centre (OPSCEN) and the WFP Regional Bureau for the Middle East, Northern Africa, and Eastern Europe.

The dashboard is based on best available information at the time of production, and information on future dashboards may vary as new information becomes available.

The boundaries and names and the designations used on these maps do not imply official endorsement or acceptance by the United Nations.