



World Food Programme

SAVING LIVES
CHANGING LIVES



WFP Lebanon | Situation Report

April 2024

OPERATIONAL CONTEXT

The fourth Integrated Food Insecurity Phase Classification (IPC) analysis conducted in March 2024, projected a deterioration in the food security situation in Lebanon - from 19 percent food insecure people in March 2024 to 23 percent between April and September 2024. Despite the stabilized informal exchange rate, the food security situation is projected to deteriorate mainly driven by the persistent political and socio-economic crises and the reduction of humanitarian assistance to Lebanese nationals, Syrian, and Palestine refugees in 2024.

The monthly cost of the full Survival Minimum Expenditure Basket (SMEB) monitored by WFP slightly increased by 5 percent between February and March 2024, to reach LBP 36.5 million (US\$ 403) for a family of five. The cost of the food basket alone remained unchanged for the same period at LBP 3.1 million (US\$ 34.5) per person per month. The inflation in local currency continued to soften in March 2024 as yearly inflation returned to double digits for the first time since 2020 - from 123.21 percent in February 2024 to 70.4 percent in March, mainly due to the stable exchange rate on the informal market since August 2023.

In line with its Country Strategic Plan (CSP) for 2023–2025, WFP remains focused on the response to Lebanon’s economic and refugee crises, as well as the additional needs linked to the escalating security situation in South Lebanon since October 2023. In April, WFP supported around 900,000 Syrian refugees and over 600,000 Lebanese nationals to meet their essential food and other basic needs.

However, due to funding constraints and based on retargeting exercises, WFP had to cut assistance to both refugees and Lebanese by up to 27 percent since November 2023.

FUNDING OVERVIEW

	% Funded	Available	Required
Country Strategic Plan (2023-2025)	23%	US\$ 726 M	US\$ 3.1 B
2024 Total Requirements	23%	US\$ 221 M	US\$ 960 M
Net Funding Requirements (May-Oct 2024) US\$ 267.3 M			

IN NUMBERS - APRIL 2024



2.5 M people in need of food assistance

Food Security and Agriculture Sector, 2024



1.49 M people received WFP assistance



US\$ 21.3 M cash-based transfers made



1,611MT (US\$ 2.6M) of food distributed

HIGHLIGHT: WFP RESPONSE IN SOUTH LEBANON

Since the onset of the conflict along the southern border, over 93,000 individuals have been internally displaced. 1,500 individuals are currently residing in shelters, while the rest are staying with families in secondary residences or sub-par dwellings improvised as shelters. Security challenges in the South also led to the closure of 50 public schools, affecting more than 10,000 enrolled students.

In addition to its regular programmes in the South, WFP supported 19,200 people affected by the conflict in April, reaching 155,600 individuals since October 2023. In April, WFP distributed one-off in-kind food parcels to 7,700 affected Lebanese people, with each parcel covering the basic food needs of one person for one month. WFP also provided daily in-school snacks to 11,500 affected students in 14 additional schools.

WFP RESPONSE

Cash Assistance for Refugees



In April, WFP provided cash assistance to 822,000 Syrian refugees (151,500 households) who can redeem their assistance at ATMs, money transfer agents, and/or shops contracted by WFP.

Due to funding shortfalls, WFP will stop providing food e-card assistance to 165,000 people from May onwards resulting in a 37 percent reduction of cash assistance to Syrian refugees from November 2023.

Discontinued refugee households were selected based on a prioritization exercise of assessed vulnerability levels and were notified by SMS about the outcome of this exercise.

Economic Crisis Response for Lebanese

In April, WFP reached 146,500 Lebanese individuals (36,000 households) with in-kind food parcels. In parallel, WFP launched the second phase of the retargeting exercise aimed at assessing the vulnerability of 13,000 households to determine their eligibility to continue receiving in-kind food assistance.

School Meals

Through its regular school meals programme, in April WFP reached 93,800 students in 180 public schools, out of which 82,300 received snacks and 11,500 students received cold meals. These meals were prepared by 104 women volunteering at nine school kitchens.

In collaboration with the Ministry of Education and Higher Education (MEHE), Agence Française de Développement (AFD), UNICEF, and International Orthodox Christian Charities (IOCC), WFP plans to assess 386 public schools in Lebanon to understand school needs and children's nutrition which will inform national nutrition programs and policies. In April, 429 health educators and WFP's contracted firm were trained to conduct the assessment interviews. Data collection, involving around 6,100 students and 400 school directors, will start in May 2024.

Support to Social Protection Programmes*

In April, WFP reached 411,400 Lebanese individuals (74,200 households) with assistance covering March and April 2024 through the National Poverty Targeting Programme (NPTP).

In coordination with the Government of Lebanon, WFP completed in April, the first phase of the recertification exercise to assess the eligibility of the households to continue receiving NPTP cash assistance in 2024. While 96 percent of the 35,800 prioritized households were visited, security concerns prevented visits to the remaining 4 percent residing in the South, Nabatieh, and Bekaa governorates. The second phase, targeting around 39,500 additional households, will start in May and is expected to conclude by mid-July 2024. WFP is concluding negotiations with the Government of Lebanon (GoL) to resume service provision of the second phase of ESSN cash transfers, to gradually reach 700,000 Lebanese individuals (160,000 households) in 2024.

Livelihoods

In April, WFP and its partner Berytech launched the fourth cycle of the [Food System Challenge](#) planning to support 12 new Lebanese small businesses for 18 months.

Nutrition

In April, WFP conducted a training session on healthy eating, nutrition during pregnancy, Infant and Young Children Feeding, complementary feeding, and screening for malnutrition to 35 participants from all 14 of WFP Lebanon's cooperating partners to effectively carry out planned activities for 2024.

GENDER & SOCIAL INCLUSION, PROTECTION & ACCOUNTABILITY TO AFFECTED POPULATIONS (AAP)

In April, the WFP call center received almost the same number of claims as in March 2024 (32,200 claims). 95 percent of these claims were addressed and closed in the same month. Notably, 19 percent of the callers were Syrian refugees who received WFP's notification SMS informing them they would be discontinued from food e-card assistance starting May 2024 due to funding shortfalls. They stressed their full reliance on food assistance to sustain their families and appealed for assistance reconsideration.

WFP escalated 234 high-risk protection-related cases to relevant partners in April, marking a significant surge from 22 cases in March. The reported cases included community tensions, protection issues, child protection, and Sexual and Gender-Based Violence (SGBV), with 73 percent of the callers reporting community tensions, reflecting escalating tensions between Syrian refugees and Lebanese.

In April, WFP also piloted an ATM simulator, an initiative aimed at enhancing the beneficiaries' confidence and understanding of ATM usage. Beneficiaries directly participated in testing this simulator at cards and PIN distribution sites and during testing sessions of the "Peer to Peer" approach.

Moreover, WFP participated in delivering Training-of-Trainers sessions focusing on Disability-Inclusive Humanitarian Action to 15 local and international organizations active in the humanitarian sector, spanning over three days. In April, WFP's assistance reached 57,961 people with disabilities.

MONITORING & ASSESSMENTS

WFP's on-site post-distribution monitoring of cash redemption points in March 2024 showed acceptable waiting time for Syrian refugees and Lebanese at both ATMs and Money Transfer Operators (MTOs).

As for the schools, 83 percent of visited schools had good internet connectivity, essential for the new digital tracking tool that WFP has introduced to monitor the stock movement of snacks. However, 40 percent of visited schools lacked a formal commodity storage room, using spaces like the supervisor's office or teacher's room instead.

KEY CHALLENGES

Due to funding shortfalls, WFP is facing significant cuts in assistance, which affect both refugees and vulnerable Lebanese and potentially impact social stability. Without prompt political and funding solutions for the Lebanese and Syrian refugees, WFP will be obliged to further reduce the scale of its assistance. WFP is in discussions with donors for additional resources in 2024.

* The NPTP is funded by WFP donors and the ESSN programme is funded through a World Bank loan to the Government of Lebanon, with WFP implementing cash transfers as a service provider.

FOOD SECURITY & AGRICULTURE SECTOR

In March, WFP and 32 sector partners reached 1.6 million refugees and Lebanese people through various modalities, of which 1.37 million individuals were assisted through cash-based transfers, 227,000 through food parcels, and 24,000 individuals through the provision of meals. In addition, 8,900 farmers and 131 agricultural cooperatives, small businesses, and association groups were supported through capacity building and/or inputs and assets provision. The estimated amount of cash disbursed by the sector was more than US\$ 12.3 million.

Since the onset of the conflict in South Lebanon, sector partners have distributed more than 516,000 daily meals, 30,000 food parcels, 1,900 Ready-To-Eat meals, and 11,200 kg of food to affected people by the crisis (as of the end of April). The sector also provided one-time cash assistance to more than 35,000 affected households and 290 farmers whose agricultural livelihoods were impacted by the conflict.

ADVOCACY, COMMUNICATIONS & PARTNERSHIPS

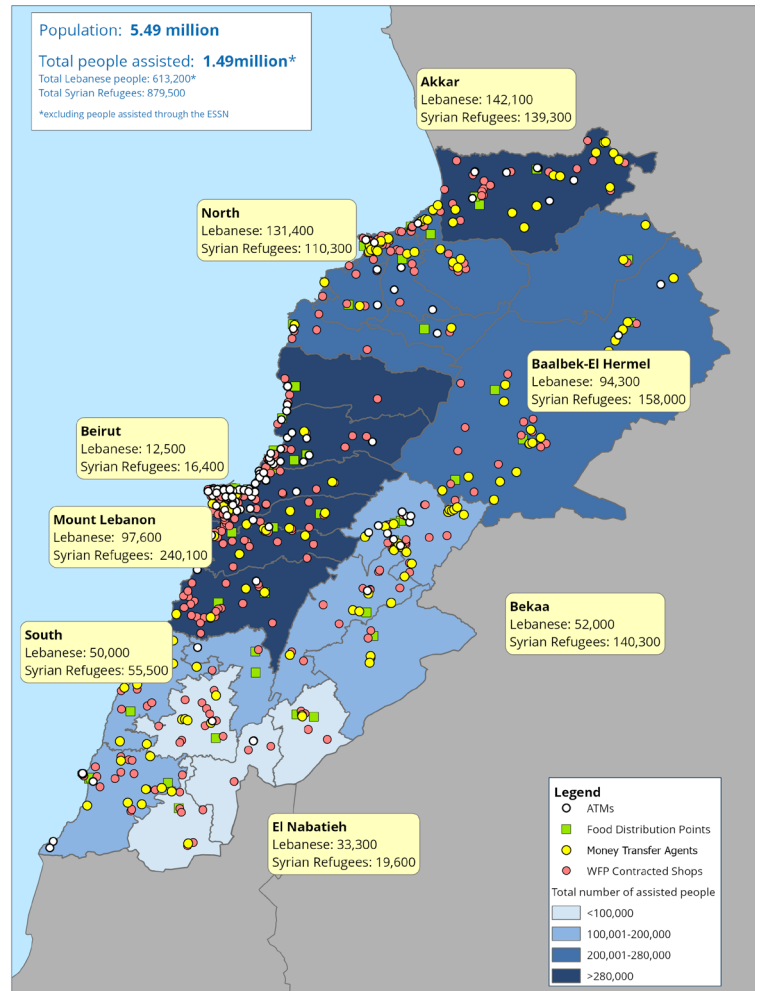
Throughout April, WFP maintained engagements with donors including the Republic of Korea, providing updates on operations programmatic changes while also advocating for additional support amidst funding reductions.

WFP also engaged with various stakeholders to diversify its portfolio, ensuring sustained assistance and addressing evolving needs, particularly in the South.

In April, WFP Lebanon highlighted on Twitter the organization's impact in Lebanon in 2023, publishing the WFP Lebanon Annual Country Report ([read more here](#)).

Additionally, WFP shared on Twitter an interview conducted by Al Jadeed TV with WFP Lebanon's Country Director and Representative Abdallah Alwardat in which he provided insights regarding WFP's ongoing efforts to bolster food security and underscored the critical need for sustaining humanitarian assistance initiatives (The video can be accessed [here](#)).

WFP CASH & IN-KIND ASSISTANCE FOR REFUGEES AND LEBANESE - APRIL 2024



In North Lebanon, the Chekka School benefits from WFP's school meals programme, offering nutritious meals and snacks, essential for children's development and academic success, while also promoting inclusivity among students.

A spirited young boy named Joseph decided to interview his classmates about snack time and capture their thoughts. In doing so, Joseph learned more about each one of his classmates' specific appreciation for school snacks, from the delicious taste to the energy boost... the snacks were a big hit. However, the initiative goes beyond the snacks' flavour or nutritional content. The equality and inclusivity that these snacks symbolize are the true subject of the story. Inspired by a classmate's statement, "I like that everyone gets the same snacks and same quantity, no one is better than the rest and we are all the same," Joseph's interviews brought to light the significant influence of WFP's work to ensure that all children, regardless of their family's financial situation, have equal opportunities. (Watch more [here](#)).

Donors

Australia, Austria, Canada, European Union, Finland, France, Germany, United Kingdom, Ireland, Italy, Lebanon's Presidency of the Council of Ministers, Malta, Norway, Private Donors, Republic of Korea, Russian Federation, Switzerland, USA