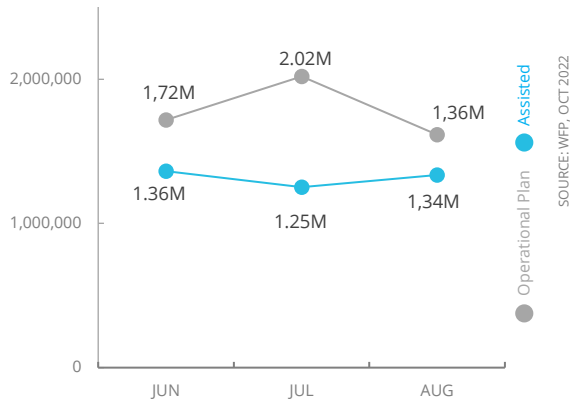


# Democratic Republic of Congo

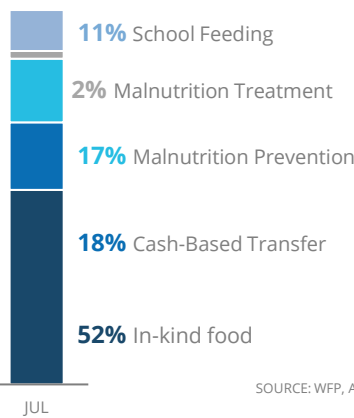
## PEOPLE ASSISTED

DR Congo Country Strategic Plan (CSP)

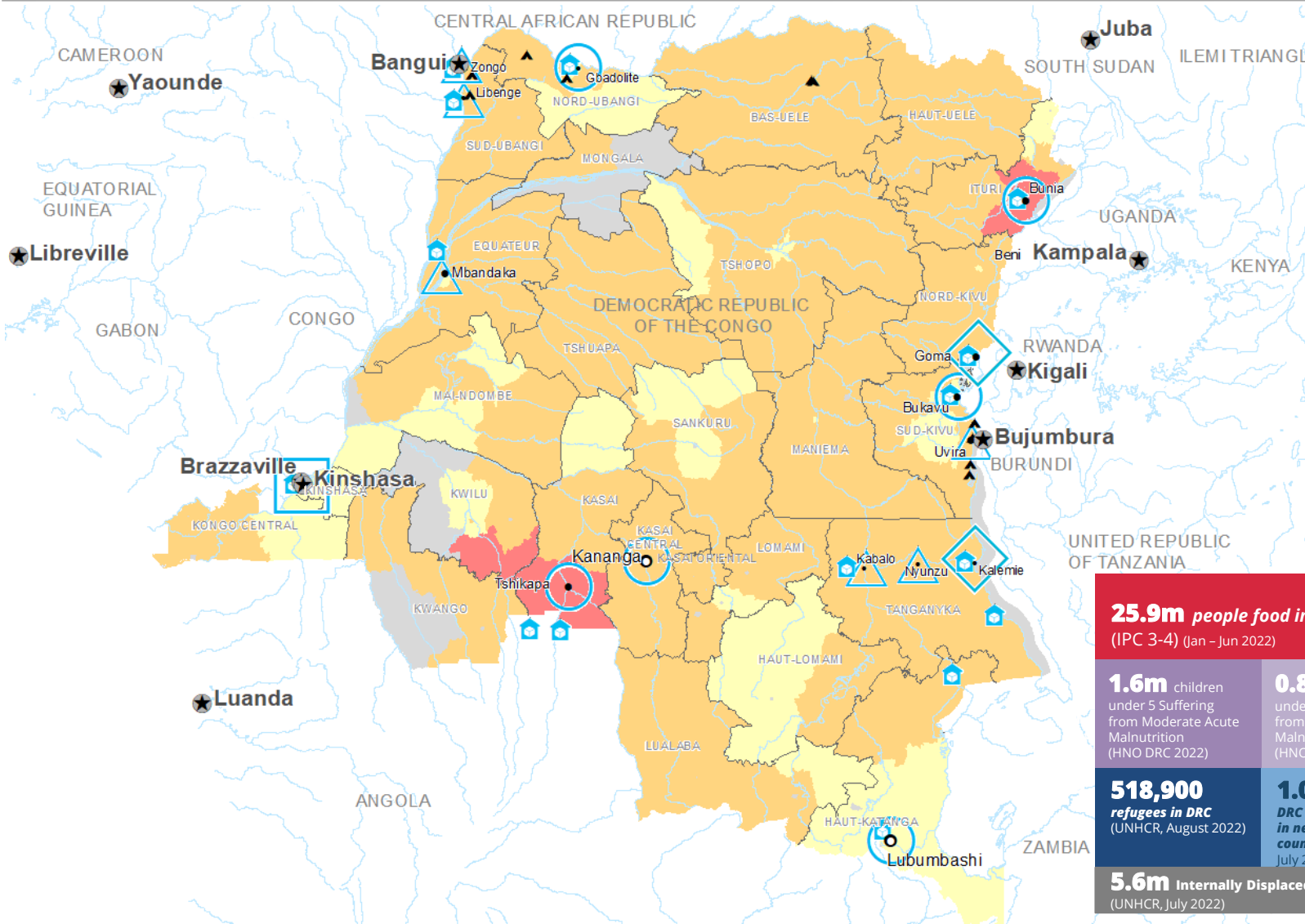
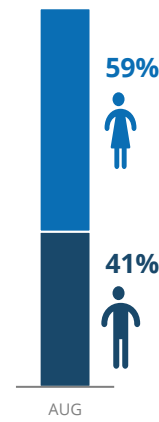


## OPERATIONAL PROFILE

By Activity



By Sex



### Integrated Phase Classification Projection January - June 2022



Produced by the WFP Operations Centre (OPSCEN) jointly with Country Office and Regional Bureau for Southern Africa. This dashboard is based on best available information at the time of production. Future updates may vary as new information becomes available.

## FUNDING

DR Congo Country Strategic Plan  
October 2022 - March 2023

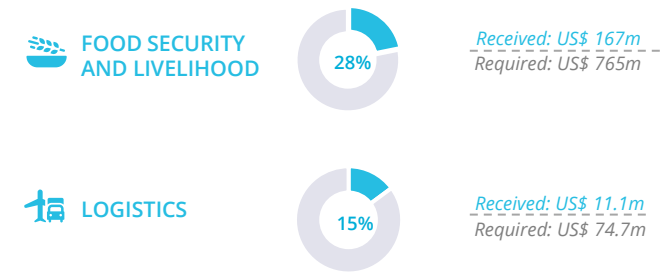
Net funding requirements  
**US\$116.3m**

2022 Emergency Response Requirement **US\$645.4m**

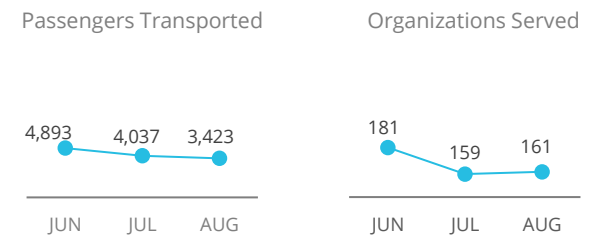
### AVERAGE MONTHLY FUNDING REQUIREMENTS (US\$)

Food: 30.7m Cash: 15.6m

### WFP-LED AND SUPPORTED CLUSTERS



### UN HUMANITARIAN AIR SERVICES (UNHAS)



Sources: WFP, UNGIWI, GAUL, GLCSC, OCHA, UNHCR, IPC.

The designations employed and the presentation of material in the map(s) do not imply the expression of any opinion on the part of WFP concerning the legal or constitutional status of any country, territory, city or sea, or concerning the delimitation of its frontiers or boundaries.  
© World Food Programme 2022.

WFP EMERGENCY CLASSIFICATION:  
**CORPORATE ATTENTION**  
SINCE 01 FEB 2022



SITUATION REPORT and COUNTRY BRIEF



SOURCE: WFP, OCT 2022

SOURCE: WFP, AUG 2022

SOURCE: FSC, OCT 2022

SOURCE: WFP, OCT 2022