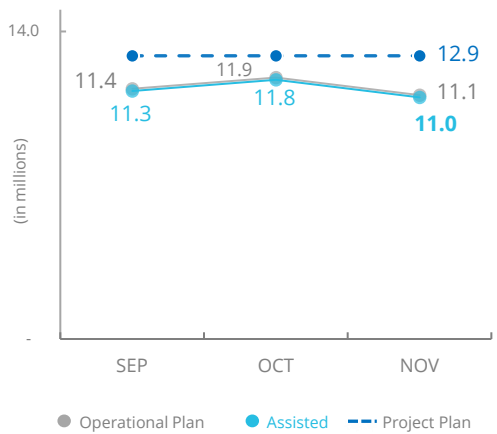
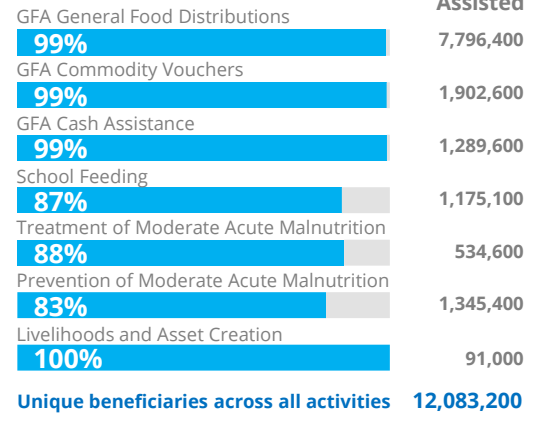


Yemen

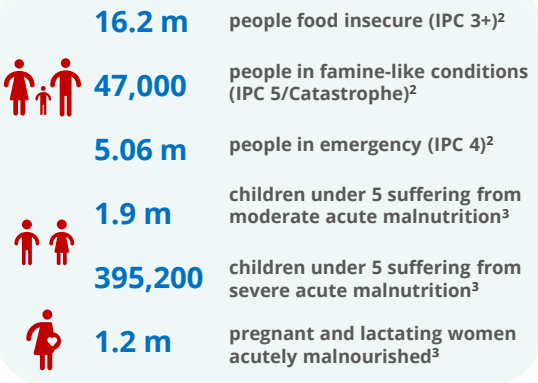
PEOPLE ASSISTED General Food Assistance (GFA)



OPERATIONAL PROFILE By Activity (November)



PEOPLE IN NEED



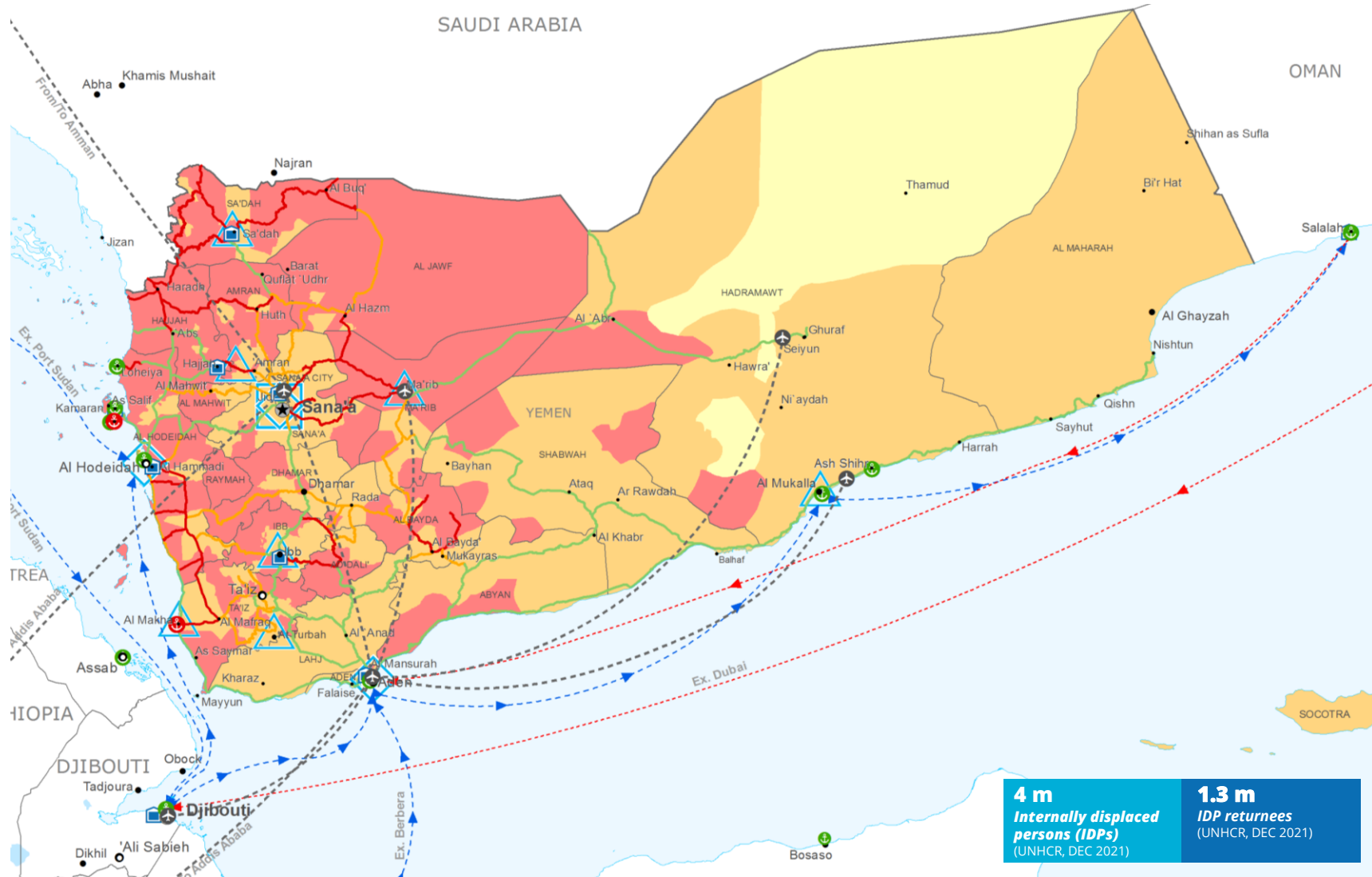
FUNDING

Yemen Interim Country Strategic Plan (ICSP)
January - June 2022

US\$765.0 m

Net funding requirements

2021 LEVEL 3 RESPONSE
Requirements: US\$1.91 bn
Confirmed Contributions: US\$1.43 bn



Integrated Phase Classification Projection (Jan - Jun 2021)

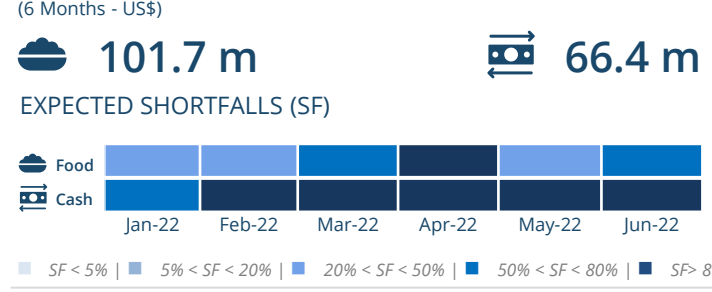
- No data
- Minimal (Phase 1)
- Stressed (Phase 2)
- Crisis (Phase 3)
- Emergency (Phase 4)
- Famine (Phase 5)

Supply Routes: Road Open, Road with Restricted Access, Road Closed, Supply Route Open, Supply Route Closed

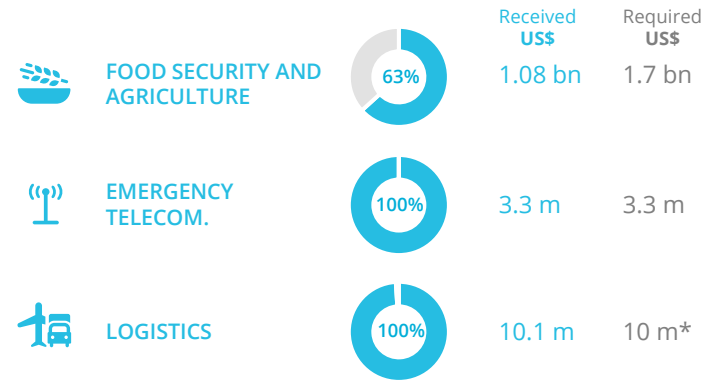
Other Symbols: National Capital, Major Town, Intermediate Town, Small Town, International Boundary, Governorate Boundary, UNHAS Connection, UNHAS Route, UNHAS Connection, UNHAS Route, IDP Camp, Refugee Camp, Refugee Center, Port Closed, Port Operational, Port with Restricted Access, Warehouse, Country Office, Area Office, Field Office

Sources: WFP, UNGIWG, GAUL, GLCSC, OCHA, UNHCR. The designations employed and the presentation of material in the map(s) do not imply the expression of any opinion on the part of WFP concerning the legal or constitutional status of any country, territory, city or sea, or concerning the delimitation of its frontiers or boundaries. © World Food Programme 2022.

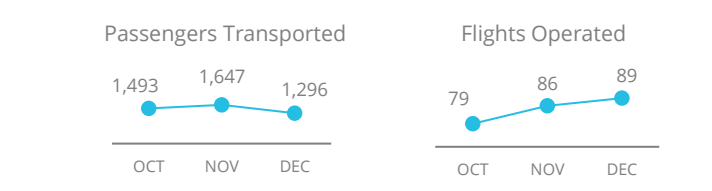
AVERAGE MONTHLY FUNDING REQUIREMENTS



WFP-LED AND CO-LED CLUSTERS



UN HUMANITARIAN AIR SERVICES (UNHAS)



WFP LEVEL 3 EMERGENCY SINCE 03 JULY 2015

SITUATION REPORT and COUNTRY BRIEF

