



World Food Programme

SAVING LIVES
CHANGING LIVES



WFP LEBANON

SITUATION REPORT – October 2022

Through its call centre, WFP ensures refugees and vulnerable Lebanese are able to provide feedback, receive information, and request assistance from WFP.
Photo: WFP/Mustapha Ghabris

IN NUMBERS



3,563,300 people in need of assistance



1.8 m people assisted in October 2022



USD 23m cash-based transfers made



4,700 MT of food distributed

SITUATION UPDATE

- The price of the food Survival Minimum Expenditure Basket (SMEB) reached an all-time high in September of LBP 988,000 per person/month, a 12 percent increase over the previous month. The increase is the result of currency depreciation in September, coupled with the full lifting of subsidies on fuel and gas.
- As of 31 October, more than 1,400 suspected cases of cholera have been reported in Lebanon, including 381 confirmed cases and 17 deaths. While vaccination is ongoing, the spread is directly impacting vulnerable communities as access to safe drinking water and medical services remains challenging.

WFP RESPONSE

- Along with Food Security Sector partners, WFP is closely monitoring the impact of the cholera spread. In close partnerships with UNICEF, WFP is communicating protection measures to beneficiaries and cooperating partners to ensure their safety during operations and redemption of assistance. Over 1 million people have already been reached through WFP's operation network.
- WFP continued the expansion of redemption points through Money Transfer Operators (MTOs), where beneficiaries were able to redeem assistance at 38 MTOs alongside the ATM network. Beneficiaries who withdrew cash at MTOs reported reduced withdrawal times.

HIGHLIGHTS

- Despite receiving assistance, 66 percent of Syrian beneficiary households did not have the economic capacity to meet their basic needs. This was mainly driven by inflation: as prices continued to rise, cash assistance was insufficient to cover survival needs. Debt levels increased at the same time, mostly to safeguard households' access to food ([Basic Needs Outcome Monitoring for Syrian Refugees](#), June 2022).
- Marking 10 years in Lebanon since it started its refugee response in 2012, WFP hosted a photo exhibition in Beirut on 20 October.



Cash Assistance for Refugees

- In October, WFP provided unconditional cash assistance to 1,050,300 refugees through 3 modalities:
 - Multipurpose Cash* for food and other essential needs redeemable at ATMs: 231,500 Syrian refugees
 - Food e-cards* for food needs redeemable at WFP-contracted shops: 354,900 Syrian refugees
 - Cash-for-Food* for food needs redeemable at ATMs or shops: 458,400 Syrian refugees and 5,500 refugees of other nationalities.



Economic Crisis Response for Lebanese

- WFP supported 298,700 vulnerable Lebanese individuals (77,800 households) with food parcels in October as part of its response to the ongoing economic crisis.



School Meals

- WFP resumed its regular school meals programme with the start of the new academic year in October. Around 62,000 Syrian and Lebanese students received school snacks and in 111 public schools. This includes 4,700 students who received sandwiches and fruits/vegetables prepared by women participating in the School Kitchens initiative.

WFP RESPONSE

- WFP and the Ministry of Education will rehabilitate 3 school kitchens in Akkar, Tyre, and Zahle starting November, in addition to installing solar panels to increase energy supply. The expansion will enable prolonged periods of cold storage of food commodities and decrease delivery costs for the school kitchens operation.



Livelihoods

- In October, WFP resumed the implementation of Food Assistance for Assets (FFA) and Food Assistance for Training (FFT) activities, part of its livelihood programme. Around 1,700 Syrian and Lebanese individuals participated in FFA and FFT activities and received cash transfers that benefitted a total of around 8,700 people.
- Livelihood activities aim at building the capacity of farmers and individuals in the food systems through specific value chains, including dairy and vegetables. In addition, they aim to enhance natural resource management and improve farming efficiency by rehabilitating agricultural assets, such as roads and canals.



Support to Social Protection Programmes

- In October, WFP assisted 352,800 Lebanese individuals (63,000 families) through the National Poverty Targeting Programme (NPTP). The target to reach 75,000 families through the NPTP is expected to be met by December.
- As of October, WFP delivered payments to 352,000 Lebanese individuals (78,000 households) on behalf of the Government for the Emergency Social Safety Net (ESSN).
- WFP and the World Bank held a meeting on 26 October to discuss the future of the NPTP and the ESSN. Agreed next steps include a joint due diligence review together with the Ministry of Social Affairs of existing social assistance programmes and based on the best practices from the NPTP and the ESSN.



MONITORING

- The [Basic Needs Outcome Monitoring for Syrian Refugees](#) found that 66 percent of households receiving WFP assistance did not have the economic capacity to meet their survival needs in June 2022. While the level of food consumption depended on the modality of assistance, the frequency and diversity of diets deteriorated for all households surveyed. This is mainly driven by the increase in inflation. Most of the assisted households rely on assistance as their main source of income and while transfer values of cash assistance were increased in April 2022, assistance remains insufficient to cover basic needs as prices continue to rise. In parallel, debt levels continued to increase, mostly to safeguard households' access to food.
- Following continued implementation of crowd management and monitoring measures, WFP successfully reduced the time of cash withdrawal by beneficiaries from 42 minutes in December 2021 to an average of 19 minutes in October 2022. The measures received positive feedback from beneficiaries, including from women who expressed feeling safer at ATMs in presence of WFP's partner staff and security guards.



GENDER, PROTECTION & ACCOUNTABILITY TO AFFECTED POPULATIONS (AAP)

- WFP received 41,520 claims in October through its call centre, with 59 percent received from women and 51 percent from refugees. Half of the claims were to request assistance, 29 percent to request information, and the rest to provide feedback, express concerns, or relay protection issues. 96 percent of claims were resolved during the same month, while the rest are being resolved by WFP or awaiting provision of feedback to callers.
- WFP marked the International Day of the Girl Child on 11 October. Girls from the local NGO "Amal" were invited to discuss the major challenges faced by girls in Lebanon and their aspirations in light of the ongoing crisis.
- WFP provided a training of trainers session to 8 cooperating partners on gender, social inclusion, protection, nutrition, and accountability to affected populations. The training aimed to support partners align their proposals, implementation, and monitoring of activities with WFP's corporate requirements.



SUPPLY CHAIN & RETAIL

- WFP opened a supply route via the port in Tripoli to reduce logistics costs and increase the efficiency of the in-kind operation.



ADVOCACY, COMMUNICATIONS & PARTNERSHIPS

- WFP hosted a photo exhibition at ArtHaus Beirut on 20 October to celebrate World Food Day and mark 10 years since the start of the refugee crisis response in 2012. The public exhibition showcased a timeline of photos portraying WFP's response as the crisis deepened. Link to media coverage can be found [here](#).
- Special Envoy for Syria and Head of Division for Lebanon, Syria and Iraq, Mr. Stefan Schneck, visited a Lebanese family receiving WFP's in-kind food assistance, and a Syrian family receiving multi-purpose cash assistance. The visit highlighted WFP's assistance to vulnerable families in Lebanon with the strong support of Germany and emphasized the impact of the assistance on beneficiaries.



FOOD SECURITY AND AGRICULTURE SECTOR

- Between January and September 2022, 40 sector partners including WFP assisted 2.3 million people living in Lebanon: 900,000 Lebanese, 1.1 million Syrian refugees, and 35,000 Palestinians. The majority received cash assistance while 712,000 people received in-kind food, 4,105 individuals had access to temporary agricultural labour, and 268 smallholder farmers received financial and technical support.



FUNDING OVERVIEW

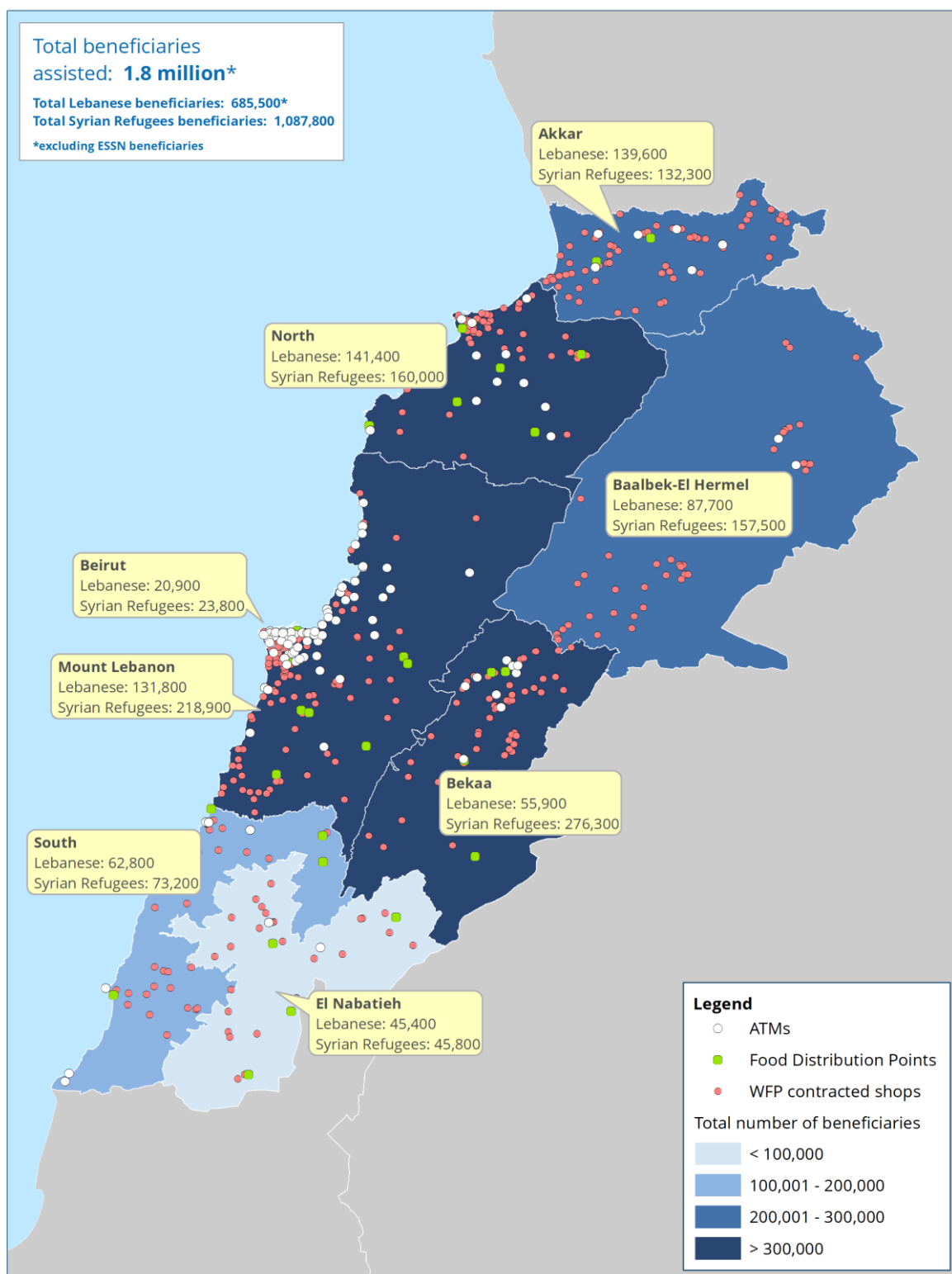
	Available Resources	Requirements
COUNTRY STRATEGIC PLAN (2018-2022)	59% US\$ 2 B	US\$ 3.4 B
2022 TOTAL REQUIREMENTS	53% US\$ 688 M <i>Includes USD 241M for the ESSN</i>	US\$ 1.3 B

NET FUNDING REQUIREMENTS (NOV 2022 - APR 2023)
US\$ 544 million



Lebanon

WFP Cash and In-kind Assistance for Refugees and Lebanese – October 2022



Donors

Australia, Canada, Cyprus, European Commission, France, Germany, Ireland, Italy, Japan, Lebanon's Presidency of the Council of Ministers, Lebanon Humanitarian Fund, Norway, Poland, Private Donors, Republic of Korea, Russia, Switzerland, UN CERF, United Kingdom, USA