



12 Nov 2024

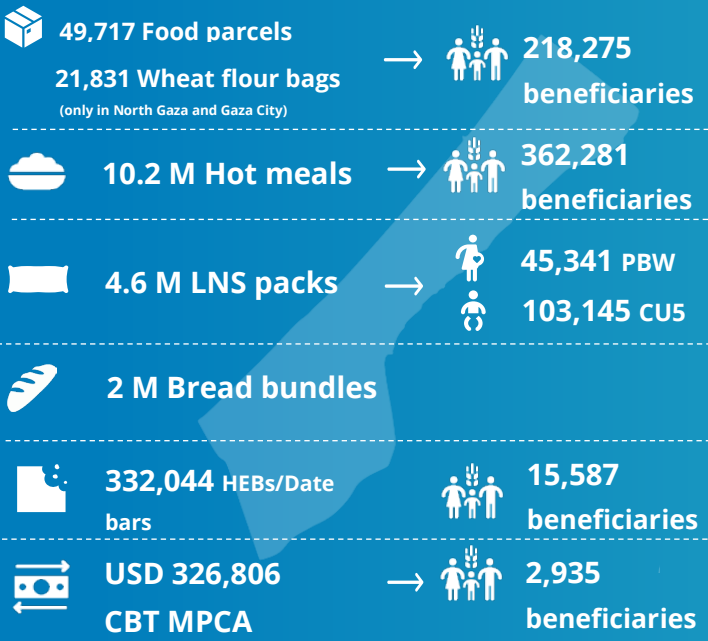
WFP PALESTINE EMERGENCY RESPONSE

External Situation Report 39

HIGHLIGHTS

- Due to limited aid entering Gaza, **WFP reached only 46 percent of 1.1 million planned beneficiaries for October**, with reduced rations. For the second month in a row, more than half the people who rely on WFP assistance did not receive it.
- On 8 November, the IPC Famine Review Committee issued an alert that the humanitarian situation in the Gaza Strip is extremely grave and rapidly deteriorating, with **a strong likelihood that famine is imminent in areas within the northern Gaza Strip**. WFP urges the international community to do everything in its power to push for the delivery of life saving food and assistance.
- Access to North Gaza remains restricted. **On 7 November, for the first time in over a month, WFP managed to dispatch a convoy with food to North Gaza** with partial success, off-loading before the intended destination. Similarly, on 11 November, WFP reached shelters housing displaced people in Beit Hanoun with life-saving rations, wheat flour and water, but still faced obstruction and crowd control issues. The area was attacked shortly after the delivery.

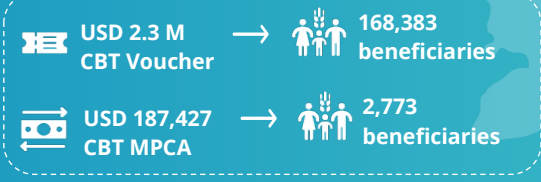
OCTOBER IN NUMBERS – 1-31 October



Palestine 680,930 people (1.4 million planned)

Gaza 509,774 people (1.1 million planned)

West Bank 171,156 people (338,000 planned)

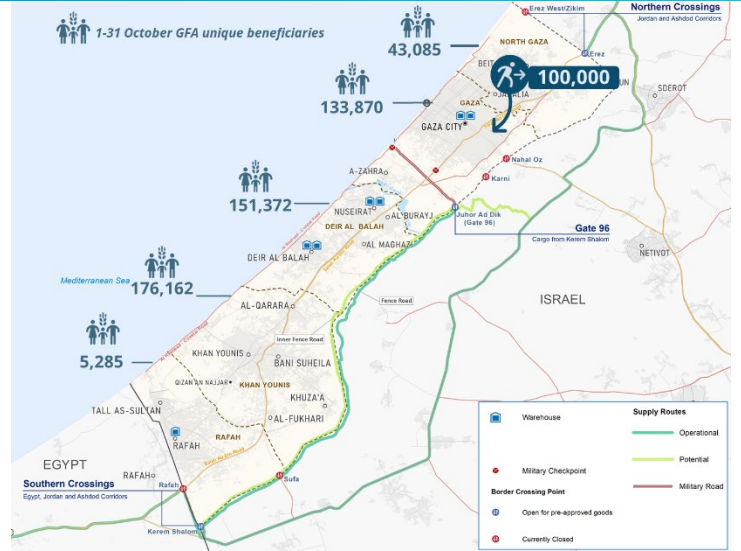


WFP six-month net funding requirement USD 179 M
Nov 2024 - April 2025

These numbers are still subject to change due to the finalization of October 2024 reporting figures from partners. The total beneficiaries figure accounts for overlap between people receiving more than one type of assistance (LNS, HEB figures are not included). ACRONYMS: Pregnant and breastfeeding women and girls (PBWG) | Children under five (CUF) | High-Energy Biscuits (HEB) | Multipurpose Cash Assistance (MPCA) | Cash-based Transfers (CBT)

SITUATION UPDATE

- **North Gaza** is almost entirely cut off from support, with hospitals' supply routes severed, schools bombed, and forced population evacuations. An estimated 100,000 people have been displaced over the last four weeks from North Gaza governorate to Gaza City.
- **Over 90 percent of Gaza's population is in crisis-level food insecurity**, with malnutrition ten times higher than before the conflict. Markets are empty, leaving people fully dependent on scarce aid and minimal commercial supplies.
- The **Gaza Market Monitor report** for November 2024 highlights that 84 percent of households interviewed cannot afford to buy food from markets.



General Food Assistance (GFA) – 1-31 October

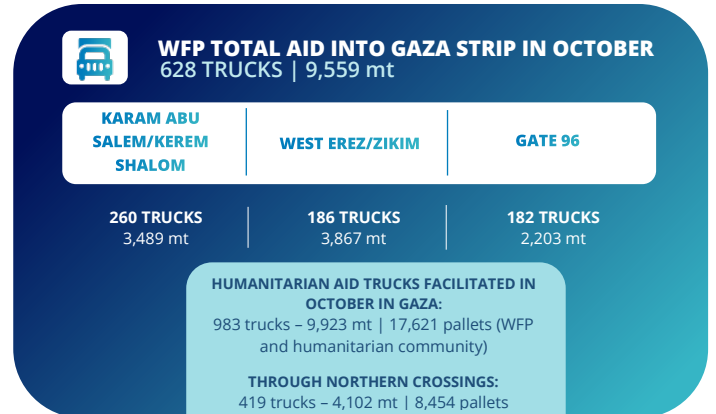
- In October, WFP reached approximately **680,930 vulnerable individuals with in-kind and cash-based food assistance across Gaza and the West Bank**. In the **Gaza Strip**, WFP reached **509,774 people*** with reduced rations, due to access constraints. **The total beneficiaries figure accounts for overlap between people receiving more than one type and duration of assistance.*
- WFP distributed **49,717 ready-to-eat parcels (RTEs)** across Gaza - and **21,831 bags of wheat flour** in North Gaza and Gaza City - reaching **218,275 displaced people**.
- North Gaza bakeries are closed**, while Gaza City has four operational bakeries. South and central Gaza bakeries face daily supply shortages, leading to overcrowding and scarcity in bread supply. In October, **over 2 million bread bundles** were produced.
- WFP provided over **10.2 million hot meals** to **362,281 people** across the Strip. In North Gaza, all kitchens are inaccessible, with only eight operational in Gaza City and about 55 in southern and central Gaza.
- A total of 45,341 pregnant and breastfeeding women and girls, along with 102,145 children under five**, received over 4.6 million lipid-based nutritional supplement (LNS) packs as complementary feeding assistance to meet their increased nutritional needs.
- 2,935 beneficiaries** received USD 326,806 in **multi-purpose cash assistance (MPCA)** used in designated shops in central Gaza, using e-wallets.
- In the **West Bank**, **171,156 people** redeemed USD 2,488,520 through **cash-based transfers**. Of these, 168,383 individuals redeemed food vouchers via the PalPay financial service provider network, enabling them to purchase food at WFP-contracted shops. 2,773 people - including displaced persons from Gaza and those affected by recent Israeli military incursions, received MPCA as physical cash through the same network.

SUPPLY CHAIN

- West Erez (Zikim)** is operational but delays at holding points and numerous inspections limit the delivery of assistance into Gaza.
- Gate 96 (via Fence Road)** is operational but limited by route challenges and restricted number of approved drivers permitted to use the road.
- Karam Abu Salem/Kerem Shalom (KS)** is generally operational but hampered by conflict-induced insecurity and widespread looting. WFP is exploring alternative roads.
- WFP's logistics augmentation efforts** are ongoing to improve access within Gaza. WFP engineering team is repairing various road, including Al Rashid Road bridge (complete), Al Matar junctions (complete), various Karam Abu Salem/Kerem Shalom routes and Al Rashid Road from West Erez/Zikim to Gaza City. WFP is

bolstering its on-the-ground capacity with added staff and support from the Logistics Cluster, including expanded warehousing, and improved platform capacity and staging areas.

- Since the start of the crisis, WFP has delivered 10,045 WFP trucks with at least 159,300 mt of food into Gaza.



- In November so far**, WFP and humanitarian partners delivered 223 trucks with 2,019 mt of food and non-food commodities. Of these, 118 trucks belong to WFP.

CLUSTERS AND COMMON SERVICES

Food Security Sector (FSS)

- The FSS and Nutrition Cluster are pushing for continuous access to food, medical supplies, water, and essential services to prevent famine. More than 1.7 million (80 percent) people targeted by the FSS have not received their monthly food rations in the Strip in October.
- FSS partners face challenges importing food from the South due to insecurity, risking kitchen closures. FSS are implementing temporary measures and seeking ways to increase supplies. More details in the [Food Security Sector Emergency Response dashboard](#).

Logistics Cluster

- Between 27 October and 2 November, three direct convoys were dispatched from Amman to West Erez with a total of 55 trucks. Of these, 21 inter-agency trucks carrying 174 mt of food, WASH, shelter, and protection items, were facilitated by the Logistics Cluster on behalf of six partners. All convoy information is available on the [interactive dashboard](#).
- As of 2 November, the Logistics Cluster has consolidated 19,888 m³ of humanitarian cargo at the common warehouse in Amman and received 47,781 m³ for common storage inside Gaza.

ACCOUNTABILITY TO AFFECTED POPULATIONS

- WFP's self-registration link** has facilitated over 1.3 million registrations, including 60,411 in October. Meanwhile, **WFP's inter-agency hotline** recorded 32,721 cases in October, with 50 percent related to WFP assistance.