



WFP Afghanistan Situation Report

17 March 2022

Commodities are offloaded into the WFP warehouse in Herat. © WFP/Mohammed Hasib Hazinyar

In Numbers

22.8 million people – half of the population – are projected to be acutely food insecure in 2022,¹ including 8.7 million at risk of famine-like conditions

4.7 million children, pregnant and lactating women at risk of acute malnutrition in 2022

All 34 provinces are facing crisis or emergency levels of acute food insecurity

Highlights

- WFP has reached **14.1 million²** people with food, nutrition, and resilience support in 2022 and **6.1 million** people thus far in March. WFP plans to reach 23 million people in 2022.
- WFP is facing supply chain challenges, including the closure of the Salang Pass to large trucks, customs clearance processes, and issues associated with the sharp increase in fuel prices.
- Funding shortfalls are forecast for May 2022; WFP urgently requires **USD 1.6 billion for the remainder of 2022.**

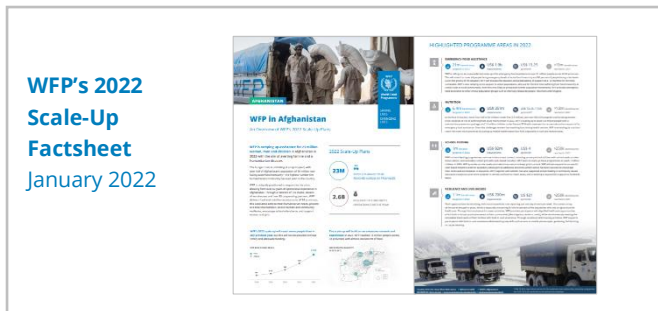
Situation Update

- **Two-thirds of the population are now resorting to crisis-level coping strategies** to feed their families. This is an eight percentage point increase from December and a staggering sixfold increase since August 2021, according to WFP's latest [Food Security Update](#) for Afghanistan. Crisis and emergency coping strategies include the sale of organs and children to survive.
- **Almost 100 percent of female-headed households surveyed are facing insufficient food consumption.** Female-headed households are more likely to employ crisis-level coping strategies compared to male-headed households.
- **Eight in ten (80 percent) income-earning households experienced a significant decrease in income** during the month of January. With the changing face of urban hunger, households in Kabul were hit the hardest, where some families braved the harsh winter season without any income at all.
- **More than half of Afghanistan's population**, or 22.8 million people, are acutely food insecure, according to the latest Integrated Food Security Phase Classification (IPC) [report](#), while more than 24.4 people are in need of humanitarian support. A total 8.7 million people are just one step away from experiencing famine-like conditions.

WFP Response

- **In March, WFP has assisted 6.1 million people** so far with food, nutrition, and resilience support, including 5.7 million people with emergency food and nutrition assistance.
- **WFP plans to reach 18 million people in March.** However, commodity transportation challenges and the rising cost of fuel have delayed distributions.
- **WFP is closely monitoring the ongoing situation in Ukraine**, which is already disrupting the international procurement and delivery of commodities to Afghanistan, particularly through its northern corridor. The regional instability has driven an increase in the price of fuel by more than 9 percent in just the last week.
- **WFP is preparing to set up five additional satellite offices** in key strategic areas across the country to facilitate its local footprint and enhance operations.
- **WFP will face significant funding shortfalls in May**, which will have a detrimental impact on immediate humanitarian and long-term resilience operations in Afghanistan. WFP urgently requires USD 525.52 to sustain operations until August, and a total of USD 1.6 billion for the remainder of 2022.

1. Integrated Food Security Phase Classification Acute Food Insecurity Analysis [report](#), November 2021 to March 2022 Projections
2. Actual beneficiary and mt numbers are as of 16 March, and are subject to change and further overlap adjustments.



Food and Nutrition Assistance

- **General Food Assistance:** WFP has assisted 5.7 million people with emergency food and nutrition support in March. Cumulatively, 208,476 MT of food has been distributed since the beginning of 2022.
- **School feeding:** Although schools remain closed in 28 of Afghanistan's 34 provinces for winter break, WFP has distributed 217 MT of high energy biscuits and 626 MT of fortified vegetable oil in March to assist **167,171** primary school children, including **137,685** girls.⁴ WFP is currently assisting 783 primary schools across the country in addition to 579 community-based education classes. By April 2022, WFP plans to further scale up assistance to reach 2,100 community-based education classes in order to increase coverage in hard-to-reach areas. Schools are set to reopen in Afghanistan on 23 March.
- **Nutrition:** So far in March, WFP has assisted **443,100** children (aged 6-59 months) and pregnant and lactating women (PLW) with nutritious foods to prevent cases of acute malnutrition, while treating **180,700** malnourished children and women. Distributions are ongoing. WFP continues to support 158 Mobile Health and Nutrition Teams (MHNTs) across 24 provinces in Afghanistan to ensure access in hard-to-reach areas. The number of active MHNTs has more than doubled since August 2021.
- **Asset creation and livelihoods:** In March, WFP has assisted **24,717** people through food assistance for assets (FFA) activities and **74,543** people through vocational skills training (VST).⁵ WFP plans to support over a million beneficiaries throughout the year.⁵ VST activities have scaled up across 17 provinces, while FFA activities have

scaled up across 22 provinces, where a diverse set of assets, including canals, roads, and community irrigation systems, are being constructed to effectively build the resilience of communities against natural shocks, and to meet the immediate food needs of targeted communities.



Supply Chain and Logistics

- Between 06 -12 March, WFP dispatched 23,314 MT of food to 133 destinations across Afghanistan.
- During the same period, 18,017 MT of food entered the country, bringing WFP's in-country stocks to 52,710 MT.
- A further 135,381 MT of mixed food commodities is expected to arrive in March through local, regional, and international procurement channels.
- Thus far in March, WFP has dispatched 38,653 MT of food for distribution, representing 26 percent of the monthly Implementation Plan (IP).
- Food deliveries from northern Afghanistan have been delayed due to poor weather, which has resulted in the prolonged closure of the Salang Pass, a key supply chain corridor within the country.



UN Humanitarian Air Service (UNHAS)

- UNHAS has conducted 643 flights in 2022 so far, transporting 4,242 passengers and 10.7 MT of essential cargo.
- UNHAS currently offers flights to 20 domestic destinations and two on demand, as well as three airbridges that connect Kabul to Islamabad, Dushanbe and Doha.
- Weekly flight schedules and route maps can be found on the [Humanitarian Booking Hub](#).

Resourcing Update

- To meet increasing needs in 2022, WFP requires USD 1.22 billion over the next six months but faces a shortfall of **USD 525.54 million**.⁴ WFP is facing an overall shortfall of **USD 1.6 billion** to sustain operations through 2022.
- Food, nutrition and UNHAS requirements were included in the [Global Humanitarian Overview](#) and [OCHA Flash Appeal for Afghanistan](#).

4. These latest figures for March correct the figures reported in the previous week's Situation Report.

5. Ibid.

6. March-August 2022.