



WFP PALESTINE EMERGENCY RESPONSE

Situation Report 25

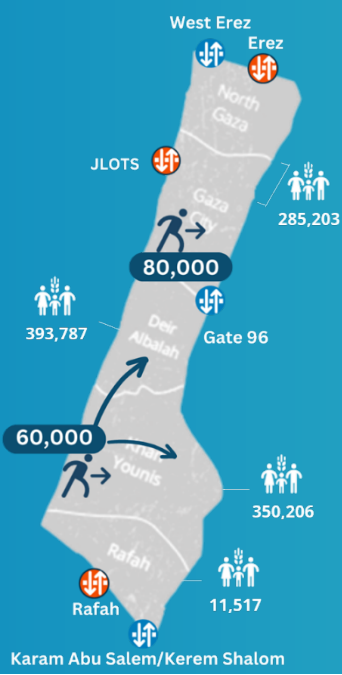
04 July 2024

HIGHLIGHTS

- Humanitarian operations face significant disruptions due to the intensification of the war throughout Gaza and constrained access, which limits the flow of humanitarian assistance, especially in the southern and central areas.
- The UN has paused maritime operations for security reasons, while WFP hired a contractor to move accumulated aid near the dock.
- Despite the Egyptian border at Karam Abu Salem/Kerem Shalom being open for humanitarian aid, deliveries are hindered by conflict, insecurity, and breakdown of public order.
- The majority of Gaza's population faces food insecurity, struggling with high prices for essentials like meat, vegetables, fruits, and sugar.
- Disease outbreaks and collapsing waste management systems pose serious health risks, especially with the increasing high temperatures. Malnutrition is on the rise.
- In June, WFP reached almost 1.2 million people: Over 1 million in Gaza received in-kind food rations. More than 153,845 individuals in the West Bank benefited from cash-based transfers.

JUNE IN NUMBERS

- 1.2 million people** assisted with general food assistance across Gaza and the West Bank.
- 822 WFP Trucks** delivered carrying 11,849 MT of food into Gaza in June, bringing the total to 6,610 WFP trucks carrying at least 112,299 MT since the start of the crisis.
- 2024 funding status**
Needs resourced: **USD 246M** | Net funding requirement: **USD 303 M**
By end of 2024
- 1.4 million** affected people targeted monthly by WFP emergency assistance in Gaza.



Ongoing bombardments in Gaza have caused civilian casualties, widespread displacement, and infrastructure destruction, disrupting humanitarian operations:

- On 27 June, increased hostilities and evacuation orders in Gaza City displaced 80,000 people overnight to the West of Gaza City.
- On 27 June, intense hostilities in West Rafah and Al-Nuseirat led to people moving towards Mawasi. Two WFP Cooperating Partner kitchens were evacuated, while two continued operating in the affected neighbourhood.
- On 01 July, a new evacuation order for about half of Khan Yunis, initially a refuge for many from Rafah, affected an estimated 60,000 people, primarily internally displaced persons.

SITUATION UPDATE

- **Food affordability** is a major issue in Gaza due to income loss and shortages of meat, vegetables, fruits, and sugar. Markets in North Gaza mainly offer canned goods with limited produce, while Deir al Balah and Khan Yunis have more variety but at inflated prices. **Almost the entire population of Gaza is food insecure.**
- **Disease outbreaks**, including high rates of Hepatitis A, and collapsed solid waste management systems are causing concern about the potential spread of cholera in Gaza.

WFP OPERATIONS

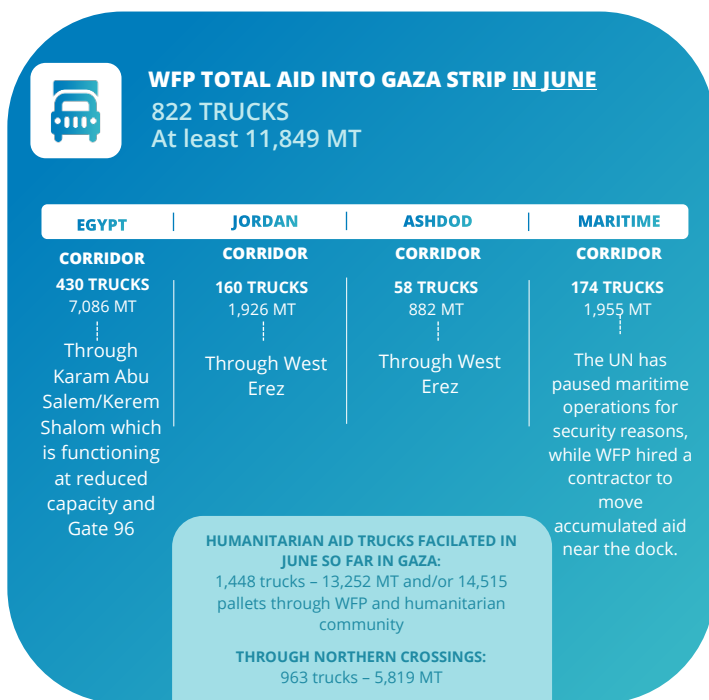
- General Food Assistance (GFA)**
- In June, WFP reached an estimated **1.2 million vulnerable people*** with in-kind and cash-based general food assistance across Gaza and the West Bank. In **Gaza Strip alone**, WFP reached over **1 million people**.
- In the Gaza Strip, WFP distributed around **178,773 partial food parcels** enough to last for 10 days for **861,091 people** - displaced persons (IDPs) in UN-

designated shelters, informal camps and within host communities – and over **2 million bread bundles**.

- In June, WFP provided around **11.8 million hot meals** through a network of 92 community-kitchens to **300,107 people**. 95 percent of which were distributed in central governorates of Deir er Balah and Khan Younis.
- **Around 4,496 pregnant and breastfeeding women and 11,463 children under five received Lipid-based nutritional supplement (LNS)** as complementary feeding assistance to meet their increased nutritional needs. LNS distributions stopped completely in Rafah and Gaza City due to lack of stock.
- In the **West Bank**, WFP provided **153,845 people with their cash-based transfers** to enable them to purchase food items from local stores.

Supply Chain

- Since the start of the crisis, until 30 June, WFP has delivered **6,436 WFP trucks** carrying at least **110,344 MT** of food into Gaza.



CLUSTERS AND COMMON SERVICES

Food Security Sector

- Urgent resumption of commercial and humanitarian supply routes in northern Gaza is needed to boost the local economy and improve cash flow.
- Recent displacements from Rafah and east Khan Younis have significantly impacted fresh food production, with many greenhouses destroyed and farms left unattended.

- Cooked meal provisions have increased in response to ongoing displacements in Gaza City. Food parcel distributions continue in unaffected areas and for newly displaced families.
- Delays in humanitarian cargo through Karam Abu Salem/Kerem Shalom are hindering food security efforts, risking spoilage and infestation. Efforts are being made to educate communities on food safety and storage.

Logistics Cluster

- The Logistics Cluster supports partners in receiving and transporting humanitarian cargo at Karam Abu Salem/Kerem Shalom and West Erez crossings, in spite of to access and security issues in the former. As of 30 June, 37,890 m³ of cargo has been received inside Gaza, showing minimal increase from May. At West Erez, cargo continues to be transported to warehouses in the north.
- In Amman, the Logistics Cluster has consolidated 14,282 m³ of humanitarian cargo and facilitated 59 convoys through Jordan, dispatching 1,438 trucks carrying 19,698 MT of aid to Gaza on behalf of 22 partners. From 1 to 30 June, seven convoys with 189 trucks and 2,218 MT of food, WASH, and shelter items were dispatched directly. All the convoy information is available on the [interactive dashboard](#).

Emergency Telecommunications Cluster (ETC)

- Advocacy is crucial to secure fuel and spare parts for Gaza's telecom infrastructure. Fuel scarcity threatens to shut down Mobile Network Operators, disrupting aid and communication services. The ETC is ensuring fuel availability for operational services.
- Voice services are limited due to fuel shortages and network congestion, impacting humanitarian aid access in Deir Al Balah.
- The ETC is working to improve internet connectivity in Deir Al Balah, coordinating with local providers and assessing new office setups post-relocation from Rafah.

ACCOUNTABILITY TO AFFECTED POPULATIONS

- WFP's self-registration link to improve data collection and beneficiary management attracted **154,761 new registrations** in June, 713,199 since its launch. Self-registration tool enables faster assistance by allowing people to update their location.
- WFP's **inter-agency hotline** available for people requesting and inquiring about humanitarian assistance answered **184,097 calls** in June, with 40,563 cases logged, 65 percent of which were related to WFP food assistance.