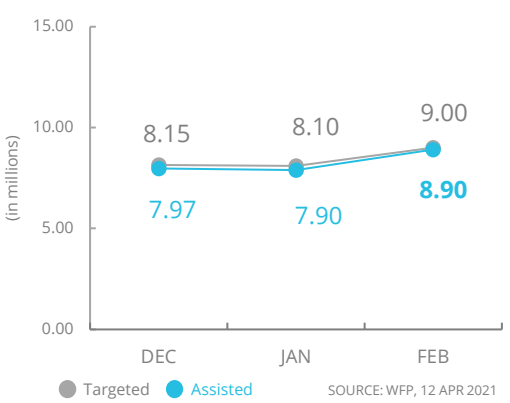
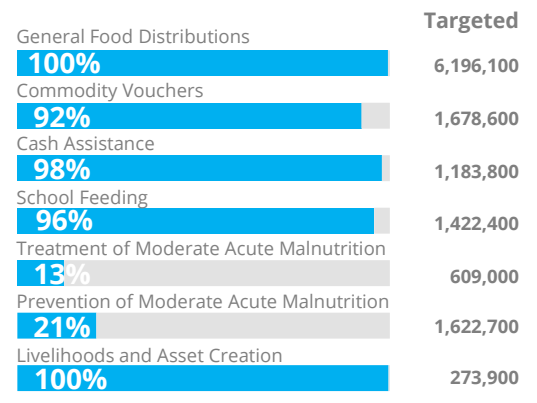


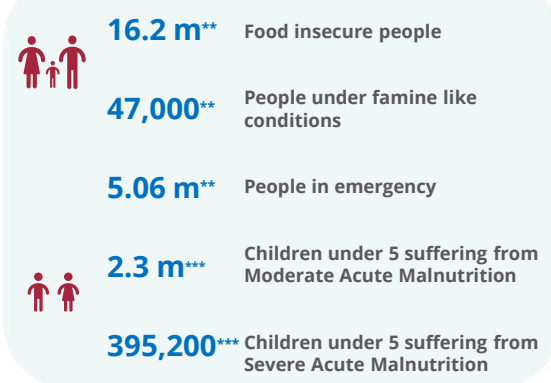
PEOPLE ASSISTED* Yemen Interim Country Strategic Plan (ICSP)



OPERATIONAL PROFILE By Activity (February)



PEOPLE IN NEED



FUNDING

Yemen Interim Country Strategic Plan (ICSP)

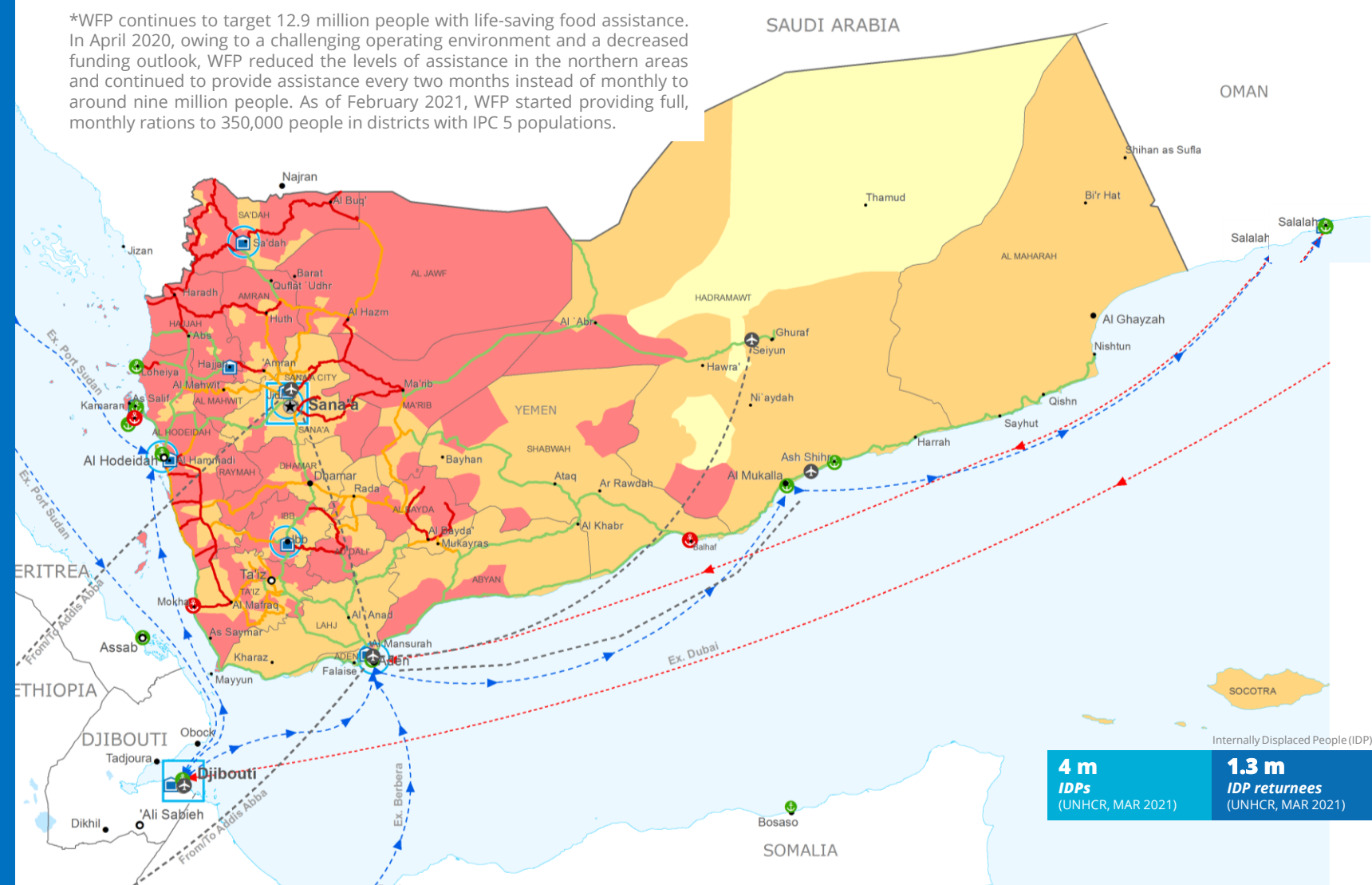
May - October 2021

US\$344.3 m

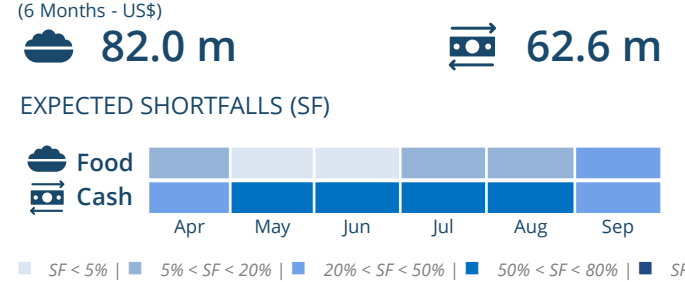
Net funding requirements
Received Contributions: US\$565.3 m

2021 LEVEL 3 RESPONSE
Requirements: US\$1.9 bn
Confirmed Contributions: US\$ 682.8 m

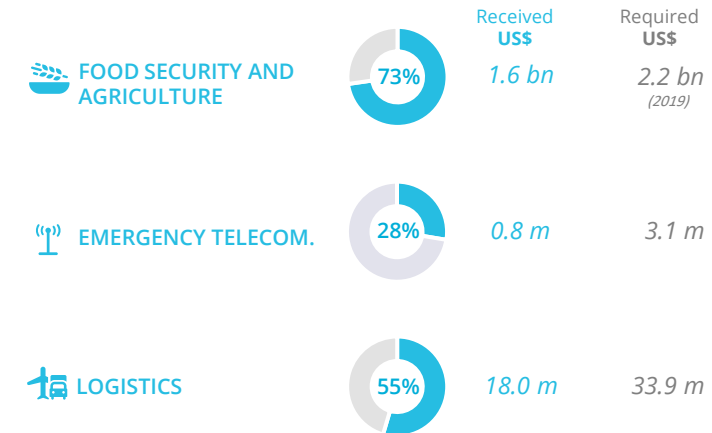
*WFP continues to target 12.9 million people with life-saving food assistance. In April 2020, owing to a challenging operating environment and a decreased funding outlook, WFP reduced the levels of assistance in the northern areas and continued to provide assistance every two months instead of monthly to around nine million people. As of February 2021, WFP started providing full, monthly rations to 350,000 people in districts with IPC 5 populations.



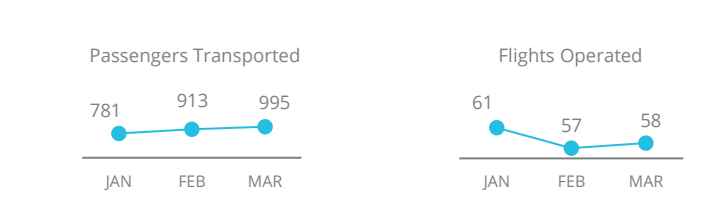
AVERAGE MONTHLY FUNDING REQUIREMENTS (6 Months - US\$)



WFP-LED AND SUPPORTED CLUSTERS



UN HUMANITARIAN AIR SERVICES (UNHAS)



Integrated Phase Classification Projection (Jan - Jun 2021)

<ul style="list-style-type: none"> No data Minimal (Phase 1) Stressed (Phase 2) Crisis (Phase 3) Emergency (Phase 4) Famine (Phase 5) 	<ul style="list-style-type: none"> Country Office Field Office Warehouse 	<ul style="list-style-type: none"> Port Closed Port Operational Port with Restricted Access 	<ul style="list-style-type: none"> UNHAS Connection UNHAS Route Supply Route Open Supply Route Closed 	<ul style="list-style-type: none"> Road Open Road with Restricted Access Road Closed 	<ul style="list-style-type: none"> IDP Camp Refugee Camp Refugee Center 	<ul style="list-style-type: none"> National Capital Major Town Intermediate Town Small Town International Boundary Governorate Boundary
---	---	--	---	---	--	---

Sources: WFP, UNGIWG, GAUL, GLCSC, OCHA, UNHCR.

The designations employed and the presentation of material in the map(s) do not imply the expression of any opinion on the part of WFP concerning the legal or constitutional status of any country, territory, city or sea, or concerning the delimitation of its frontiers or boundaries. © World Food Programme 2020.

WFP LEVEL 3 EMERGENCY SINCE 03 JULY 2015

SITUATION REPORT and COUNTRY BRIEF